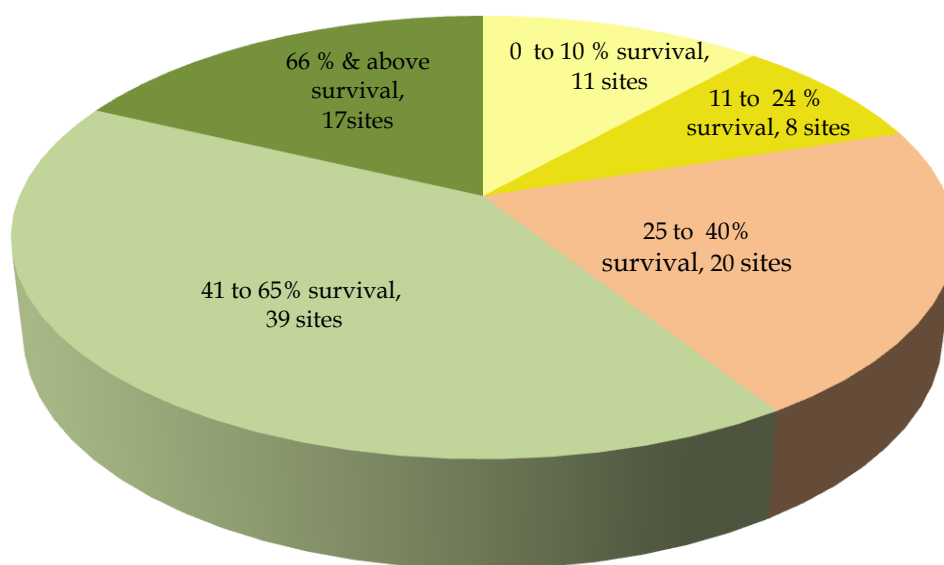


Evaluation of 2010 Rains Plantation-Evaluation Report No. 472
Circle wise Survival Percent of Evaluated Plantations

Circle	Total Sites evaluated	No. of sites				
		0 to 10 %	11 to 24 %	25 to 40%	41 to 65%	66 % & above
1	2	3	4	5	6	7
Nagpur	8	-	1	1	3	3
Chandrapur	9	2	-	2	4	1
Gadchiroli	4	1	1	-	-	2
Yavatmal	5	3	-	-	2	-
Amravati	4	1	-	-	2	1
Aurangabad	10	-	4	3	3	-
Dhule	14	-	-	4	10	-
Nashik	7	2	-	3	2	-
Thane	12	2	-	3	7	-
Pune	12	-	2	2	4	4
Kolhapur	10	-	-	2	2	6
Total :	95	11	8	20	39	17
Percent to the total sites		12%	8%	21%	41%	18%



No. of sites with less or more than 40% survival

